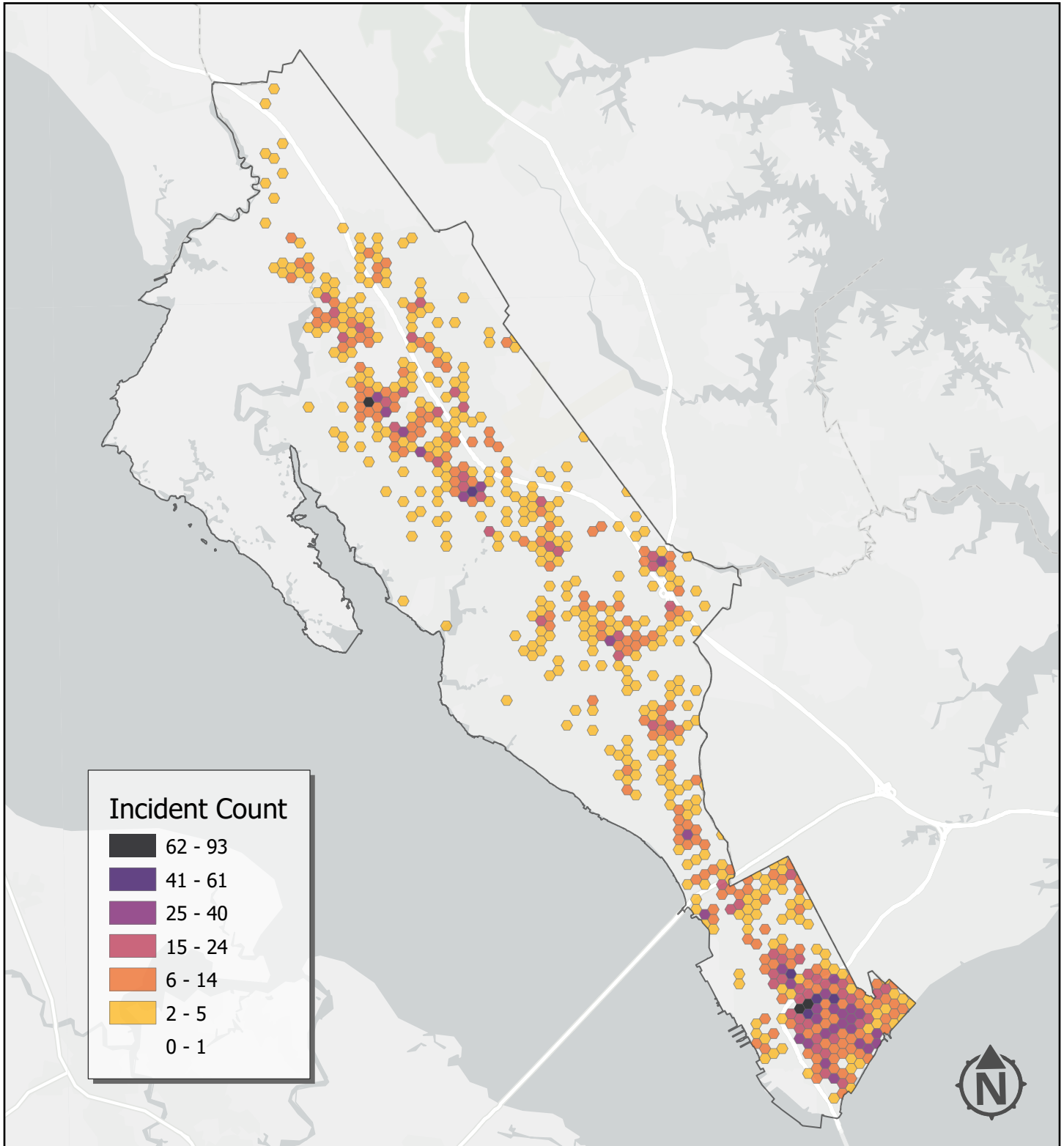


Gun Crime Incident Hotspots



This map represents the spatial distribution of gun crime incidents of all types during the period 2018 to 2022.

Incident points have been grouped into hexagonal bins measuring 1,000 feet across. The color of the bin corresponds to the number of incidents that occurred within that area during the five year period under consideration. Bins with fewer than two incidents are not displayed.