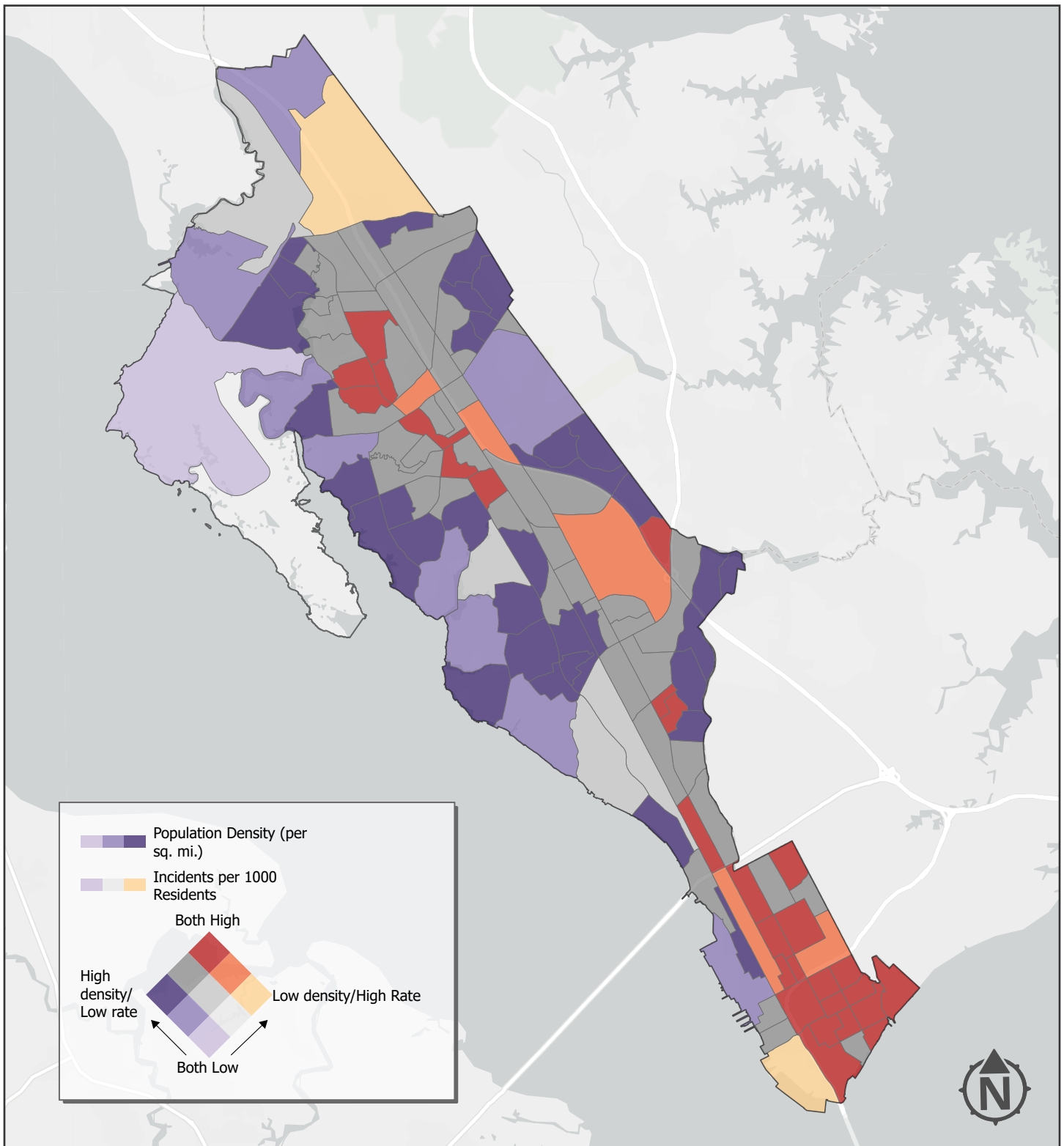


Gun Crime Rate vs. Population Density



This map depicts the gun crime rate, measured as incidents per 1,000 residents, in relation to population density at the U.S. Census Bureau's census block group level for the period 2018-2022

Purple hues correspond to the lowest gun crime rates, gray hues to moderate rates, and red/orange indicate the highest gun crime rates in the city. Color shade corresponds to population density, such that dark purple, dark grey, and dark red correspond to the most densely populated block groups. The tan-colored block groups in the extreme southwest and far northeast corners of the city are outliers. Their apparently high gun crime rate is an artefact of their exceedingly low total populations (14 and 6, respectively).